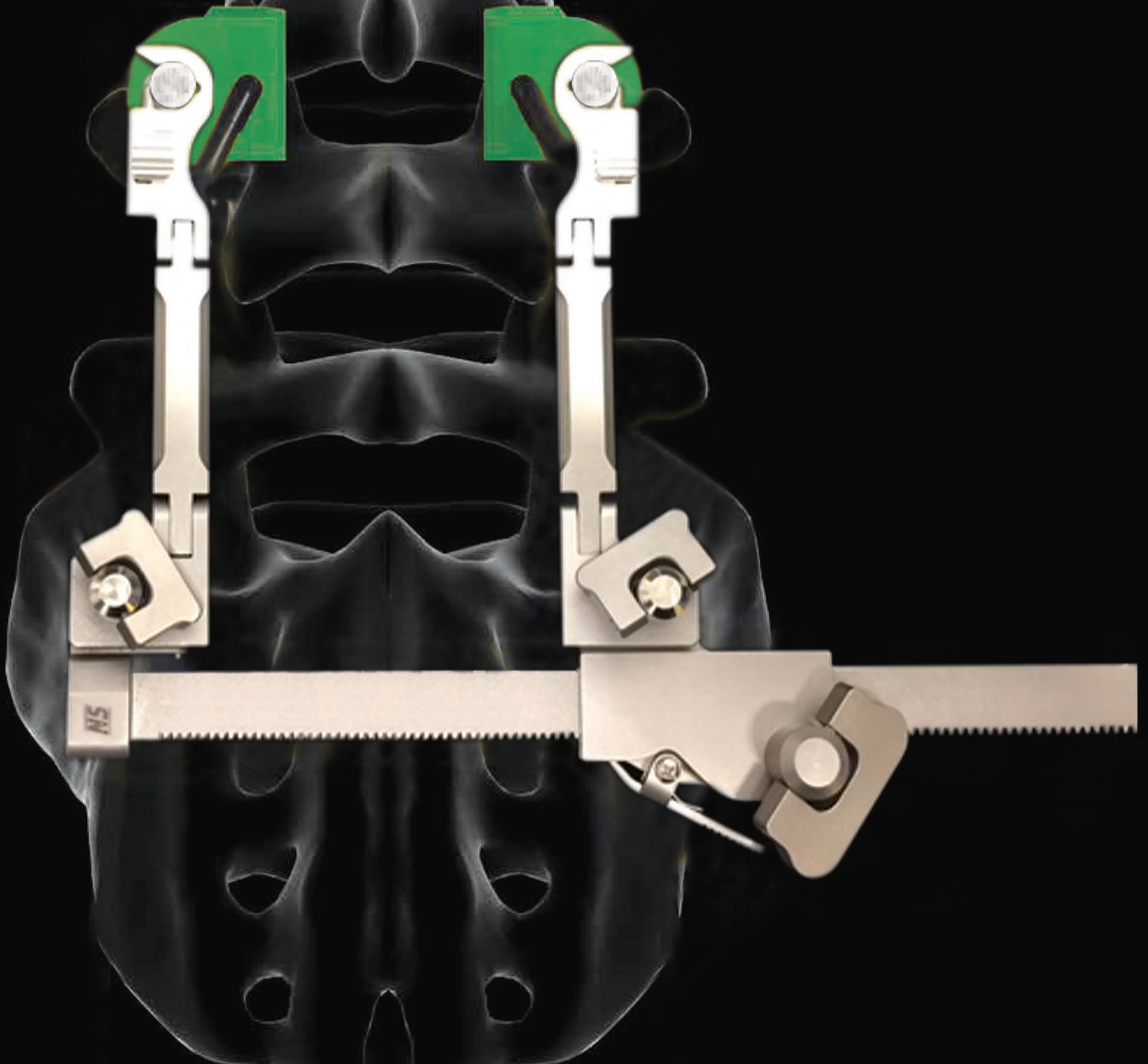


NOVUS | SURGICAL

Midline Retractor



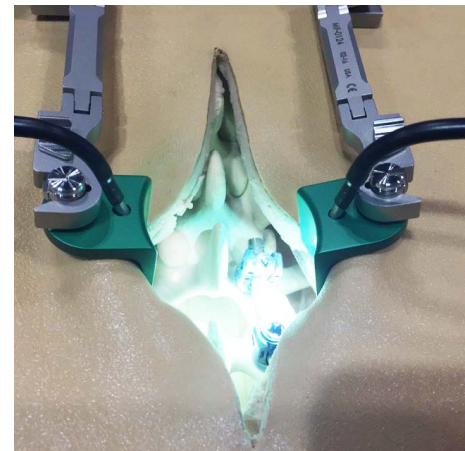
EXPERIENCE INNOVATION

Novus Surgical Midline Retractor

Retractor blades sit atop the facet capsules;
to facilitate a less invasive Midline incision



- Pivoting Retractor Arms; increase exposure without enlarging the incision



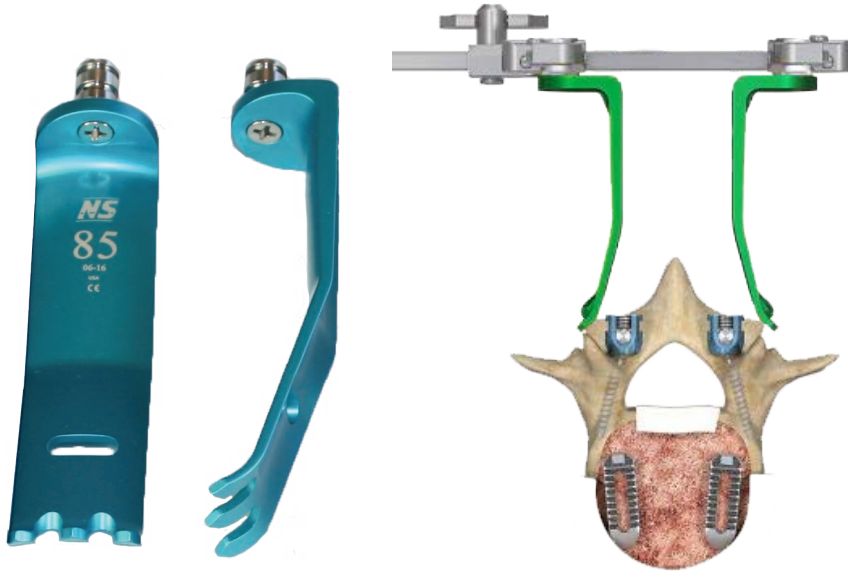
- Optional LED Delivers Bright Light through dual ports



- Radiolucent Blades
- Minimally invasive design

Retractor Blades

Midline retractor blades are radiolucent and excellent for procedures using fluoroscopy



Dual Blade Holder

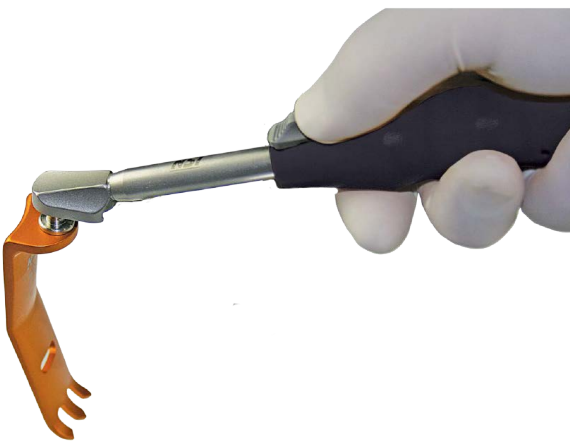
- Holds 2 blades per side to accommodate multilevel procedures



- Blade Lengths: 45mm – 120mm
- Blade Width: 23mm

Blade Handle

Blade Handle creates a hand-held retractor, used to place the blade into the operative site



Lighting

- Bright 50-watt LED Light Source
- Bifurcated Light Cable (10')



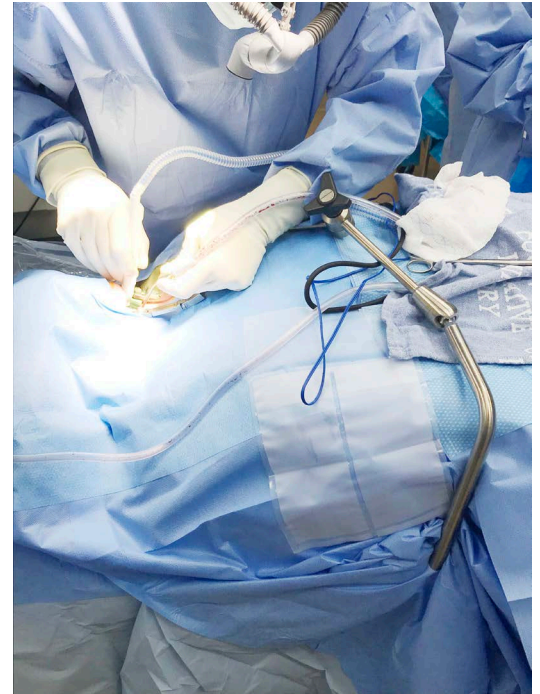
OPTIONAL: ARTICULATING ARM



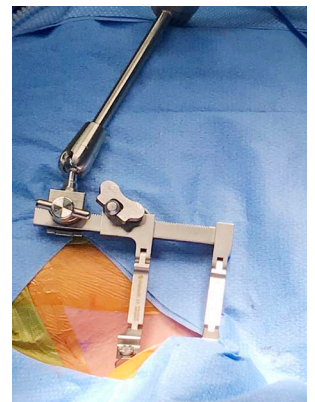
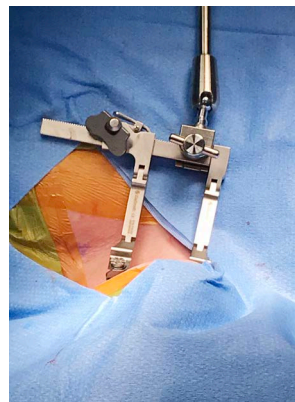
*Integrated **LOW-PROFILE** Clamp*



Universal Table Clamp



Low Profile Setup



(Fixation Options)

**Ideal for Retractor Frame
Stabilization**